



SERVICE LETTER

SL0005

Rev A

Page 1 of 2

EFFECTIVE DATE: This SERVICE LETTER is effective January 5, 2016

SUBJECT: REAR CONTROL STICK COVER KIT INSTALLATION

MODELS AFFECTED: CC18-180 S/N 0001 AND ON

COMPLIANCE TIME: NO REQUIRED COMPLIANCE TIME

PURPOSE: Allows the removal of the rear control stick and installation of a rear stick cover.

PARTS LIST:

<u>PART</u>	<u>DESCRIPTION</u>	<u>QTY</u>
TC2579-001	AFT STICK MAST COVER	1
HDW-S6R.25TA	SHEET METAL SCREW, #4 THREAD, .25" SS	4

INSTRUCTIONS:

1. Read all instructions before beginning any work.
2. Remove aft stick boot cover by unsnapping eight snaps (see Figure 1).
3. Remove the tension nut, washer, and bolt to take out the aft control stick (see Figure 2). Retain all hardware for future reinstallation.
4. Center the rear control stick mast cover over the torque tube mast and position as far aft as possible.
5. Move the front control stick through the full range of motion (including trim) and ensure there is no contact between the rear stick stub and the stick cover.
6. Secure to floorboard with four HDW-S6R.25TA screws as shown in Figure 3 on page 2.
7. Print TC10000AFM Supplement 9.15 and put into the aircraft's POH.
8. Make logbook entry stating the rear control stick was removed, the rear control stick cover installed and SL0005 Rev A was complied with. The change to weight and balance is negligible.
9. For control stick reinstallation instructions, refer to TC10000AFM Supplement 9.15.

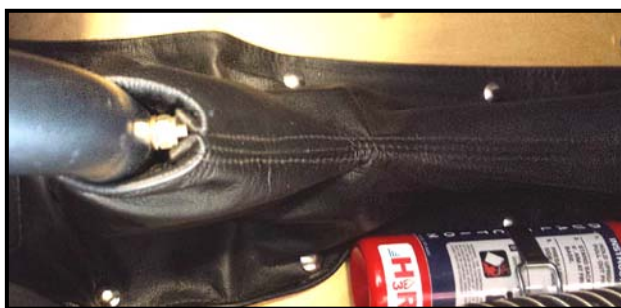


Figure 1 – Aft Stick Boot Cover



Figure 2 – Hardware Removal

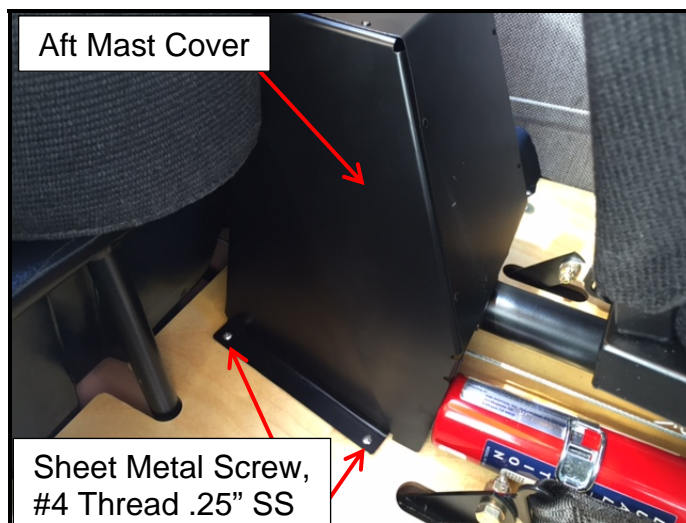


Figure 3 – Rear Control Stick Cover Installed

If you are no longer in possession of this aircraft, please forward this information to the present owner/operator and notify Cub Crafters, Inc. Contact the customer service department at:

Cub Crafters, Inc.
1918 S. 16th Avenue
Yakima, WA 98903.
1-877-484-7865 or 1-509-248-9491
support@cubcrafters.com

Please include the aircraft registration number, serial number, current name, and address of the owner and/or operator.